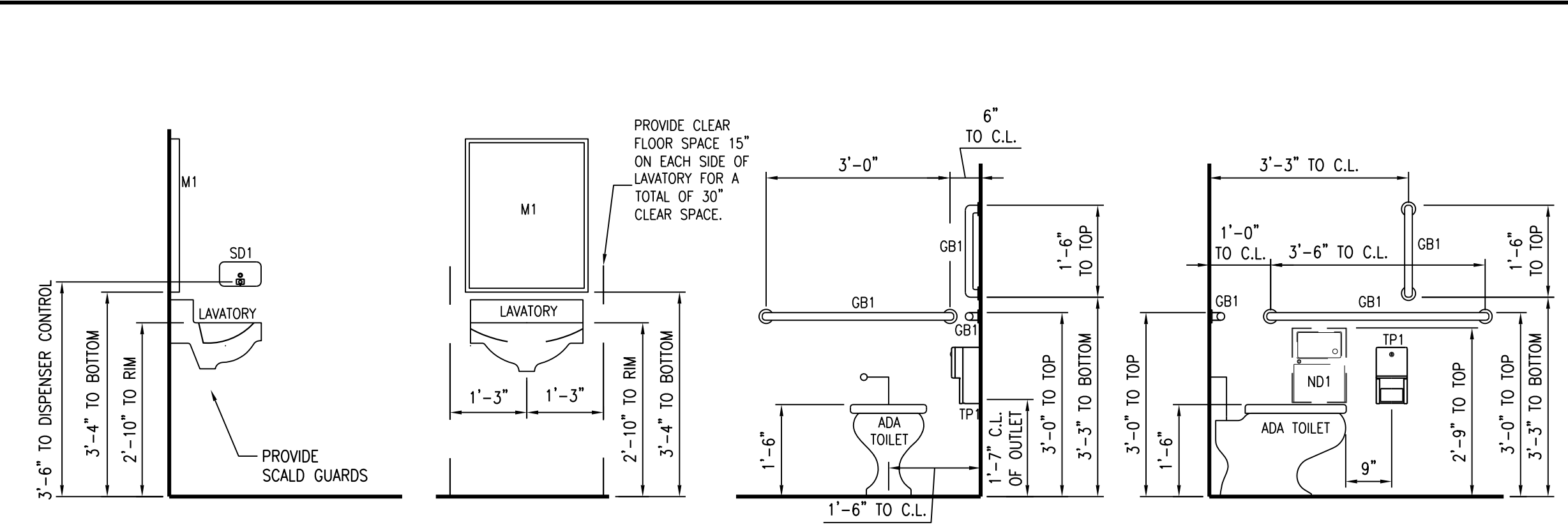


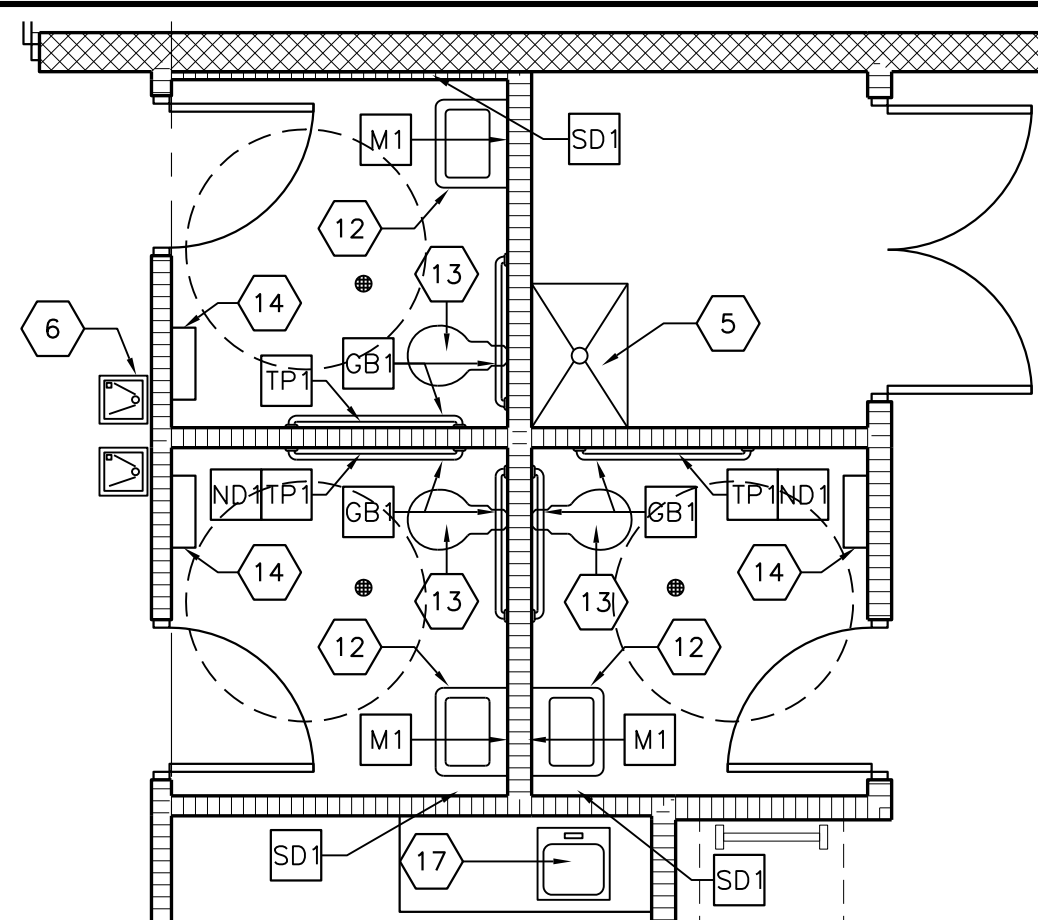
1 OVERALL FLOOR PLAN
1/8"=1'-0"

KEYED NOTES

- McMASTER CARR (OR EQUAL) ALUMINUM COMPONENT RAILING SYSTEM FOR CART STORAGE. SURFACE MOUNTED. VERIFY EXACT LOCATION AND EXTENTS WITH TENANT.
- CASH WRAP SYSTEM BY TENANT. REFER TO ENGINEERING DRAWINGS FOR LOCATION OF POWER DATA.
- 44" WIDE X 56" TALL OPENING IN WALL FOR TENANT'S CONVEYOR SYSTEM, WITH HEAD HEIGHT AT 7'-0" AFF. WRAP OPENING WITH GWB. VERIFY DIMENSIONS OF OPENING WITH TENANT. INSTALL TENANT PROVIDED WINDOW TREATMENT - COORDINATE WITH TENANT FOR REINFORCEMENT REQUIREMENTS.
- PLASTIC LAMINATE BENCH 18" DEEP. REFER TO DETAIL 2/A6.2.
- 24 X 36 MOP SINK. PROVIDE (2) 48" X 48" FRP PANELS AT MOP SINK - (1) EACH WALL. PROVIDE SEALANT AT EDGE OF FRP AND WALL AND EDGE OF FRP AND SINK. REFER TO ENGINEERING DRAWINGS FOR SINK MODEL NUMBER.
- ADA COMPLIANT HEIGHT AND STANDARD HEIGHT ELECTRIC WATER COOLERS. REFER TO ENGINEERING DRAWINGS.
- NEW INTERIOR STOREFRONT TO MATCH EXTERIOR. WALL TYPE WS ABOVE. VERIFY CONNECTIONS WITH SLIDING DOOR MANUFACTURER.
- PROVIDE PIECE OF 22 GA GALVANIZED SHEET METAL WITHIN WALL, FULL WIDTH AND HEIGHT OF WALL BEHIND GYP BOARD, TYPICAL AT EACH WALL BETWEEN FITTING ROOMS.
- PROVIDE 18" X 48" MIRROR - M2. BRADLEY 781-1848 MOUNTED 20" AFF. PROVIDE CLEAR SEALANT AT PERIMETER OF MIRROR TO SEAL GAP BETWEEN MIRROR AND WALL. INSTALL CENTERED BETWEEN BENCH AND CORNER OF WALL. TYPICAL ALL FITTING ROOMS.
- NEW 4" 4,000 PSI CONCRETE SLAB ON GRADE WITH 10 MIL POLYETHYLENE VAPOR RETARDER. CONCRETE TO BE COLORED WITH LIQUID ADD MIXTURE CHROMIX 0288 AUTUMN BEIGE. 4'X4' SOFT CUT SAW CUTS TO BE PROVIDED IN RETAIL AREA - SUBMIT LAYOUT TO G.W. SEE STRUCTURAL PLANS. CAULK ALL JOINTS SONNEBORN NP2 MEDIUM BRONZE. CONTROL JOINTS SEALED WITH COMPATIBLE SEALER. FF=35, FL=25 SMOOTH TROWEL FINISH.
- NEW DOCK DOOR AND EQUIPMENT. SEE DOOR SCHEDULE.
- WALL MOUNTED ADA SINK MOUNTED AT 34" AFF TO TOP. ADA COMPLIANT FAUCET. REFER TO ENGINEERING DRAWINGS FOR MODEL NUMBER. PROVIDE SCALD GUARDS ON ALL SUPPLY AND DRAIN LINES.
- ADA COMPLIANT FLOOR MOUNTED FLUSH VALVE TOILET. REFER TO ENGINEERING DRAWINGS FOR MODEL NUMBER. RIM HEIGHT TO BE AT 18" AFF.
- PROVIDE AND INSTALL "EXCEL X-LERATOR" ELECTRIC HAND DRYER, MODEL XL-W WITH RECESS KIT. INSTALL WITH BOTTOM OF DRYER AT 37" AFF. PROVIDE 24" X 36" STAINLESS STEEL PANEL BELOW HAND DRYER, TYPICAL ALL TOILET ROOMS.
- PROVIDE 3/4" F.R. PLYWOOD BEHIND GYP BOARD ON OFFICE SIDE OF WALL, FROM FLOOR TO ABOVE CEILING HEIGHT OF ROOM. SEE WALL TYPES.
- STANDARD CORNER GUARD TO MATCH WALL COLOR.
- PRE MANUFACTURED WOOD CABINETS WITH PLASTIC LAMINATE COUNTER AND BACK SPLASH. REFER TO ENGINEERING DRAWINGS FOR SINK MODEL. SINK DOES NOT HAVE GARBAGE DISPOSAL. SEE ELEVATION 1/A6.2.
- F.R. PLYWOOD THIS ROOM. REFER TO WALL TYPES ON INDEX SHEET FOR MORE INFORMATION.
- INSTALL 4"X4" STEEL ANGLE AT WALL BASE PER TENANT SPECS - PAINTED SAFETY YELLOW.
- ROOF ACCESS LADDER AND HATCH LOCATION. SEE DETAIL 1/A5.3. PROVIDE LOCKING HINGED ACCESS GATE AT FLOOR LEVEL.
- PROVIDE AND INSTALL SWING ARM DOCK LIGHT MOUNTED TO WALL TYPICAL AT EACH DOCK LOCATION. SEE ELECTRICAL PLANS FOR POWER.
- WHITE PLAM COUNTER. 1-1/2" DOUBLE LAYER PLYWOOD CORE WITH STAINED 1 X 2 POPLAR FRONT FACE STAINED CHERRY COLOR AND URETHANE COATED. 30" DEEP WITH 4" BACKSPLASH. SET 29-1/2" AFF. BRACKETS TO BE WHITE 21X28 FAST CAP SPEEDBRACE BRACKET.
- FUR OUT WALL WITH 2" METAL STUDS AND ONE LAYER 5/8" DRYWALL ROOM SIDE. PROVIDE BATT INSULATION AND VAPOR BARRIER. RUN WALL TO 6" ABOVE CEILING LINE.



3 TOILET ELEVATIONS
1/2"=1'-0"

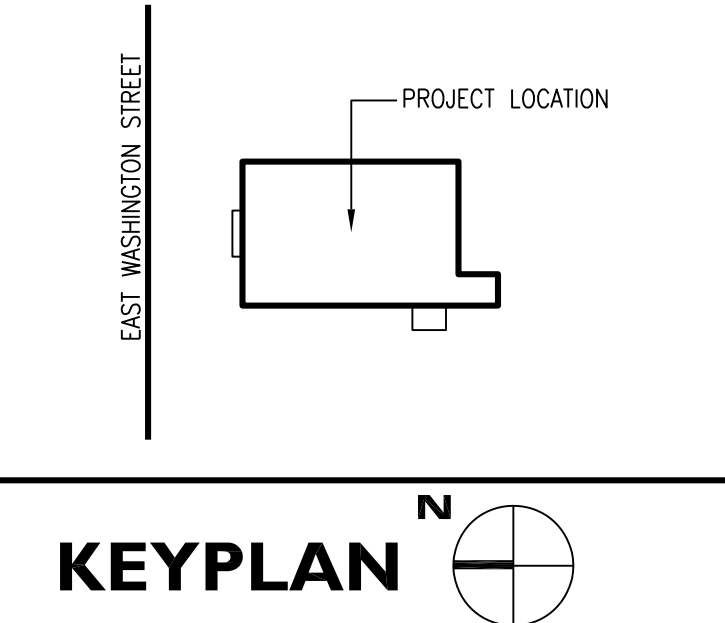


2 TOILET ROOM PLANS
1/4"=1'-0"

ACCESSORY LEGEND

MARK	SYMBOL	BRADLEY/BOBRICK #	DESCRIPTION	REMARKS	MOUNTING HEIGHT
TH1	☐	AMERICAN SPECIALTIES 7340-5	BRIGHT POLISHED STAINLESS STEEL ROSE HOOK	(4) EACH LOCATION	54" AFF TO CENTERLINE
GB1	—	BRADLEY # 8-812 X 36 8-812 X 42 8-812 X 18	36" AND 42" GRAB BARS FOR TOILET INCLUDE 18" VERTICAL GRAB BAR	PROVIDE PEENED GRIP AND CONCEALED MOUNTING WITH SNAP FLANGE.	34" AFF TO CENTERLINE
M1	—	BRADLEY# 781-2430	MIRROR		40" AFF TO BOTTOM
M2	—	BRADLEY# 781-1848	MIRROR		1'-6" W X 4'-0" H SEE KEY NOTE XX
ND1	—	BRADLEY# 8-4781-15	SANITARY NAPKIN DISPOSAL UNIT.	1.2 GALLON CAPACITY	30" AFF TO TOP
TP1	—	PROVIDED BY TENANT	TOILET PAPER DISPENSER	GC TO INSTALL TENANT PROVIDED. GC TO PROVIDE BLOCKING.	VERIFY
SD1	—	PROVIDED BY TENANT	SOAP DISPENSER	GC TO INSTALL TENANT PROVIDED. GC TO PROVIDE BLOCKING.	VERIFY

ALL TOILET ROOM SCAING TO BE PROVIDED AND INSTALLED BY TENANT.



KEYPLAN

THIS DRAWING AND THE IDEAS, DESIGNS AND CONCEPTS CONTAINED HEREIN ARE THE EXCLUSIVE INTELLECTUAL PROPERTY OF CURRAN ARCHITECTURE, INC. NO PART OF THIS DRAWING IS TO BE REPRODUCED OR TRANSMITTED IN ANY FORM OR BY ANY MEANS, ELECTRONIC OR MECHANICAL, WITHOUT THE WRITTEN CONSENT OF CURRAN ARCHITECTURE, INC. © COPYRIGHT 2012, CURRAN ARCHITECTURE

CURRAN ARCHITECTURE
WWW.CURRAN-ARCHITECTURE.COM

6925 EAST 96TH ST., SUITE 105
INDIANAPOLIS, IN 46250
317 . 288 . 0681 VOICE
317 . 288 . 0753 FAX

REVISIONS

NO.	DATE	DESCRIPTION
01	07-05-12	PERMIT SET
02	08.01.2012	AS1 02 CITY COMMENTS
03	08.07.2012	CONSTRUCTION SET

DRAWN BY: MAL
CHECKED BY: SWC
CLIENT SIGN OFF: [Signature]
ISSUE DATE: 08.07.2012



GOODWILL STORE
10499 EAST WASHINGTON ST
INDIANAPOLIS INDIANA 46229

120067
A.I.I