

SITE DEVELOPMENT INFORMATION:

GENERAL

SITE ADDRESS: 5800 N. DAVIS HIGHWAY,
PENSACOLA, FLORIDA 32503

PARCEL ID: PORTIONS OF
35-15-30-1205000000
35-15-30-1202000000
INCLUDING ALL OF
35-15-30-1206000000

ZONING: C-1
FUTURE LAND USE: COMMERCIAL
CURRENT USE: COMMERCIAL/VACANT

Revisions:

07-15-2015	

Daniel I. Corliss, P.E.

P.E. #78521

Designed By: DIC

Drawn By: JAS

Checked By: FJF

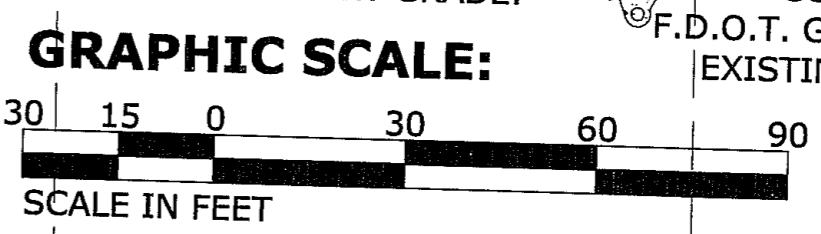
Date: 01-23-2015

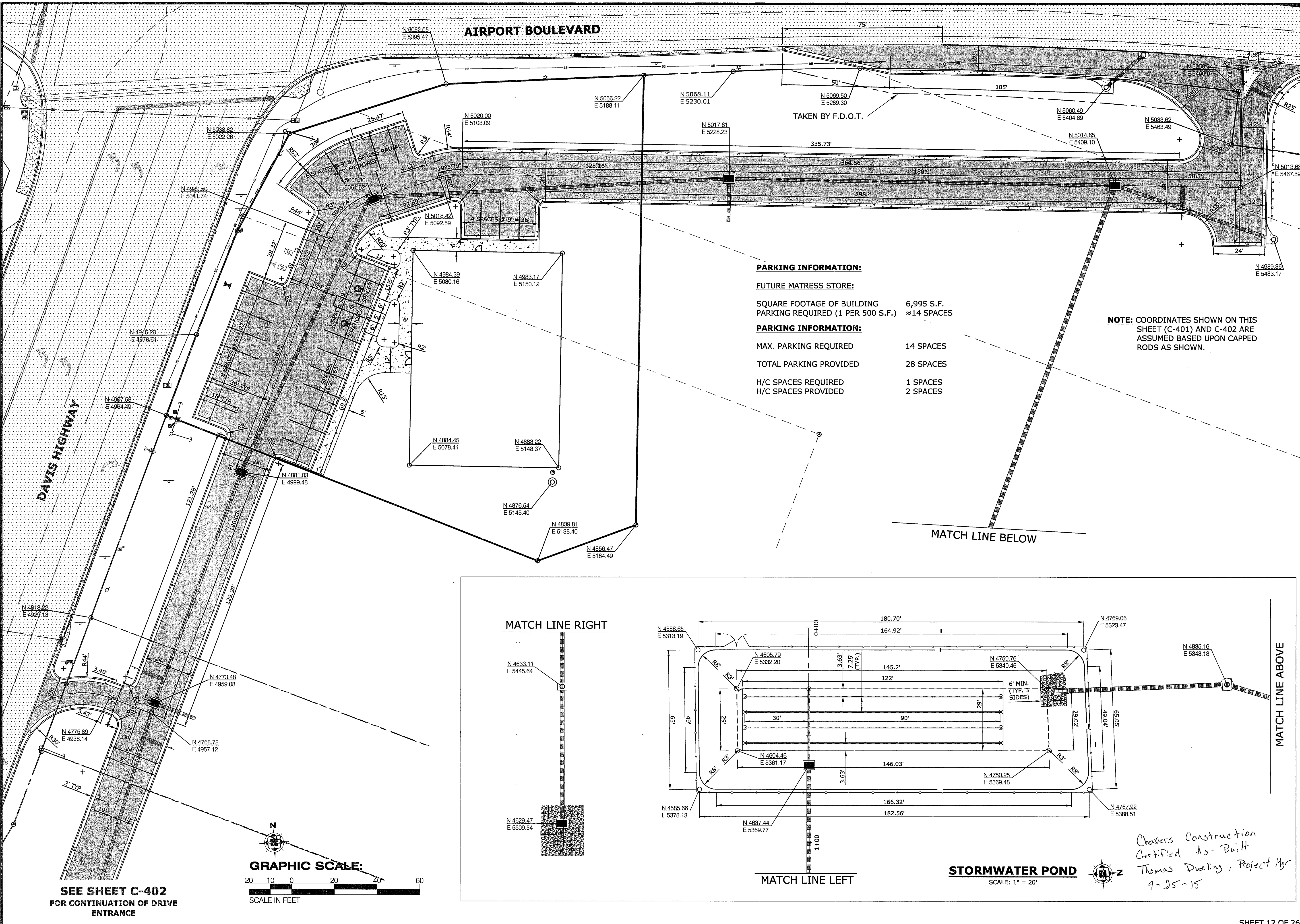
Job Number: 130008

File Name: SEE LEFT

Sheet: **C-201**

Chavers Construction
Certified As-Built
Thomas Duelling, Project Manager
9-25-15





PARKING INFORMATION:

FUTURE MATRESS STORE:

SQUARE FOOTAGE OF BUILDING 6,995 S.F.
 PARKING REQUIRED (1 PER 500 S.F.) ≈ 14 SPACES

PARKING INFORMATION:

MAX. PARKING REQUIRED 14 SPACES
 TOTAL PARKING PROVIDED 28 SPACES
 H/C SPACES REQUIRED 1 SPACES
 H/C SPACES PROVIDED 2 SPACES

NOTE: COORDINATES SHOWN ON THIS SHEET (C-401) AND C-402 ARE ASSUMED BASED UPON CAPPED RODS AS SHOWN.

Revisions:
Daniel I. Corliss, P.E.
P.E. #78521
Designed By: DIC
Drawn By: JAS
Checked By: FJF
Date: 01-23-2015
Job Number: 130008
File Name: SEE LEFT
Sheet: C-401

*Chavers Construction
 Certified As-Built
 Thomas Dwelling, Project Mgr
 9-25-15*